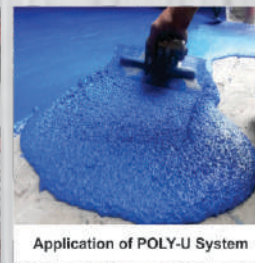
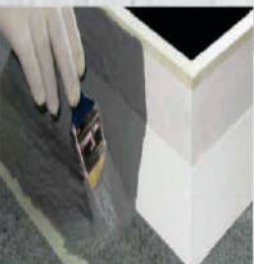


ZOOM

TECHNOLOGY

A ZOOM Group holdings Company



Application of POLY-U System



COMPANY BROUCHER



ZOOM

TECHNOLOGY

A ZOOM Group holdings Company



Group Intro.

Pakistan based group since 1991, 32+ years of experience dealing in commercial building constructions projects, **Construction Chemicals, Heavy Machinery, Power and Diamond Tools, Remote Demolition, Handheld Power Cutters, Piping Technologies, Anchoring Systems and Hand Tools.** 58 Mega Projects completed and get registration from "Pakistan Engineering Council" in Category –B **(4000 Million).**

Group successful is due its team contains more than 750 plus permanent professionals located all over Pakistan with latest required technology and the most important is the prayers of the youth getting education in our free educational trusts.

CEO Message

I am pleased to share that **ZOOM Technology** is one of the **ZOOM** Group holdings Company working for a very simple mission! Make technology as an asset for your business. We boost your business through technology by Latest European Tools with very affordable prices. We will not leave you down in the middle of the day. We work around your business. As your technology partner, when your business grows ours will grow with you. We have a win win situation only because we always take care for minor things! Another important factor in our success is quality in all aspects. We feel satisfaction by serving our life time customers.

Core Values



Customer Come First



Integrity in All We Do



Continuous Improvement



Innovation For Growth



24/7 After Sales & Services



Best Talent - 1 Team

TABLE OF CONTENTS



FASTENER & SUPPORTING SYSTEM 01

Self Drilling Screw, Drywall, Nylon Anchors, Mechanical & Chemical Anchors, Drop In Anchor Pipe Clamps, U Bolt, Clavs Clamps, U Channels



PIPING TECHNOLOGY 02

Pipe Benders, Threading Machine
Pipe Cutters, Pipe Testing Pumps
Vacuum Pumps, Gas Recovery Machine
Pipe Welding Machine, Gauges, Core Cutting
Inspection & Drain Cleaning Machine
Tiles & Road Cutters, Diamond Blades,



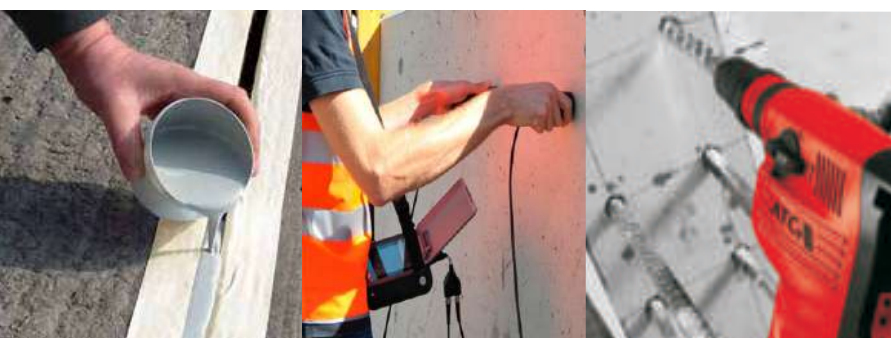
POWER TOOLS 03

Screw Driver, Drill Machines, Combi Hammer
Demolition Hammer, Grinders, Cut-Off Saw
Air Compressor, Air Blower, Welding Machine
Diamond Cutting Disks, Socket Wrench Sets
Hand Tools,



HEAVY MACHINERY 04

Plate Compactor, Concrete Cutter
Power Trowel, Jumper Hammer, Grinding Machine
Vibrator, Roller, Screed Leveler, Water Pump,
Steel Bar Bendet, Steel Bar Cutter,
Concrete Mixer, Generators



ENGINEERING SERVICES 05

Rebar Grouting, Anchor Grouting,
Core Cutting Breaking,
Concrete Testing, Concrete Scanning
Concrete Repairing &
Structure Strengthening
Joint Sealing, Epoxy & PU Flooring,
Water Proofing

TECFI® is an Italian company founded in 1997 and specialized in designing, manufacturing, promoting and trading of fixing systems and general fasteners. Because of the high and very quickly developing level of technology of this market, Tecfi had to work hard to earn positions and reach technological and scientific respect. From the very beginning Tecfi invested in a high tech laboratory, an advanced quality control system and a qualified team. Those are the strong holds that allowed Tecfi to gain competitive advantages, represented by patents and very strict product certifications (for few players in the world).

PRODUCT LINE

1. Roofing fixing systems

3. Heavy duty fixing systems

5. Light fixing systems

7. Woodpecker® - Wood line

9. Cables and Hydraulic fixing systems

11. Fixing tools and accessories

2. Fixing systems for renewable energy plants

4. Windows and frames fixing systems


6. Drywall and hollow fixing systems

8. Sealants, Adhesives and Foams

10. General fasteners


12. T-Store - Merchandising

Heavy Duty Fixing Systems



Epoxy Resin **Vinylester Resin**

Metal Anchors ETACE-Option 1




HVE - ETAn. 10/0060Option 1
(Ø10/M6 + Ø24/M16)

HXE - ETAn. 11/0336Option 1
(Ø8 + Ø16)

AJE - ETAn. 11/0319Option 1
(Ø8/M8 + Ø20/M20)

Metal Anchors ETACE-Option 7




DXE - ETAn. 10/0453 Option 7
(Ø10/M6 + Ø18/M12)

DSE - ETAn. 08/0058 Option 7
(Ø8/M6 + Ø16/M12)

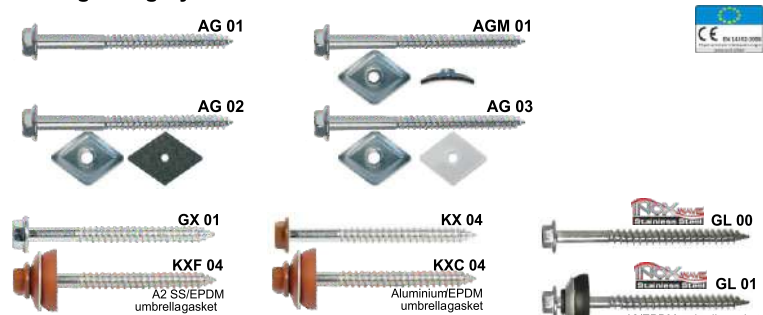
ZJE - ETAn. 13/1012Option 7
(Ø6/M6 + Ø20/M20)

VSHandyplug® range



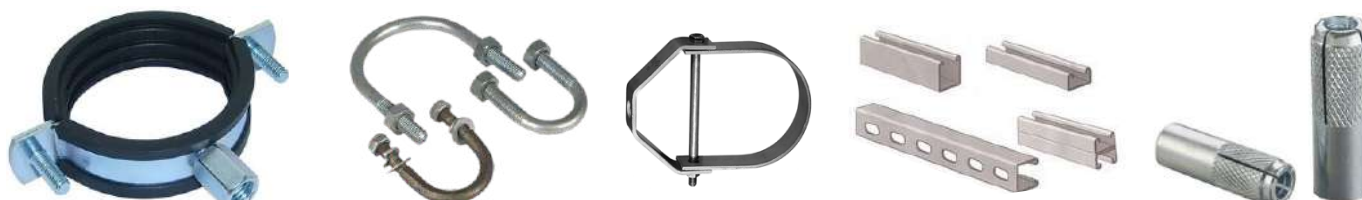
Zinc Plated Steel A2-20 Stainless Steel

Roofing Fixing Systems



AG 01, AG 02, AG 03, GX 01, KX 04, KXC 04, GL 00, GL 01

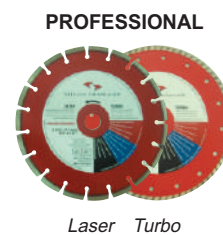
A2 SS/EPDM umbrellagasket Aluminium/EPDM umbrellagasket A2/EPDM umbrellagasket



Pipetool Technologies at work

Product Range

- Tube Cutters
- Copper Bonding
- Pipe Bending
- Core Cutting
- Pipe Threading Machine
- Diamond Cutting Blades
- Testing & Leak Detection
- PVC & U PVC Welding (Roweld)
- HVAC Systems
- Inspection & Drain Cleaning
- General Purpose Tools
- Bench Saw Tiles Cutter & Road Cutters



BLZ. Sloped notch

Introduction

SOMAFIX BRAND which is founded 1987, is excellent in the power tools, hand tools, air tools and garden tools. We enjoy good reputation for our strong innovation ability.

Our company has put much emphasis upon enterprise management, holding the tent of “high quality, brand first, credit paramountcy, good development” as our development policy; On the base of the management tent of “High jump-off point, strict standard, innovation and development” persisting in “same quality, equal price; same price, super quality” with high quality and competitive price the products have won good reputation and rely from the clients.



Cordless Drill (SFS12L)



Cordless Drill (SFL144)



Impact Drill (SFIM900)



Rotary Hammer (SFH2680)



Rotary Hammer (SFHLT1050)



Rotary Hammer (SFHLT1200)



Rotary Hammer (SFHLT1500)



Demolition Hammer (DH1700)



Demolition Hammer (SFHL1100)



Angle Grinder (AG900)



Cut-Off Saw (SFKS2000)



Air Compressor (SFHK50)



Electric Blower (SFUF600)



Welding Machine



Gasoline Lawn Mower



Tester



Hand Level



Vernier Caliper



Diamond Cup Grinding Wheel Turbo



Diamond Saw Blade



Combination Plier



Long Nose Plier



15PCS 3/4" Dr. Socket Wrench Set(6-PT)



Bent Nose Plier



Hand Riveter



Torx Screwdriver (Classic)



Utility Knife



Hacksaw Frame



Tube Cutter



Tile Cutter



Machine Hammer



Double Open Spanner



Pruning Saw



90° Double Pipe Wrench



7 PCS 1/4" Dr. E Type Socket Set

PLATE COMPACTOR



CONCRETE CUTTER



POWER TROWEL



JUMPER HAMMER



GRINDING MACHINE



VIBRATORY ROLLER



SCREED LEVELER



PENDULOUS INTERNAL VIBRATORS



WATER PUMP



STEEL BAR BENDET



STEEL BAR CUTTER



CONCRETE MIXER





CONCRETE TESTING SERVICES

CORE CUTTING, WALL SAW & WIRE SAW CUTTING SERVICES

RE-BAR & ANCHOR GROUTING SERVICES

WATERPROOFING SERVICES

JOINT SEALING SERVICES

EPOXY & PU FLOORING SERVICES

CONCRETE REPAIRING & STRUCTURE STRENGTHENING

Concrete Testing Services

Schmidt Hammer Testing Services

We provide an on-site service to facilitate the sampling and making of concrete test cores as well as a collection service. All cores done through Diamond core cutting in complete solution with testing services.



Concrete Scanning Services

We provide an on-site service to facilitate the sampling and making of concrete test cores as well as a collection service. All cores done through Diamond core cutting in complete solution with testing services.



Ultrasonic Pulse Velocity Test on concrete

We provide an on-site service to facilitate the sampling and making of concrete test cores as well as a collection service. All cores done through Diamond core cutting in complete solution with testing services.





Core Cutting, Wall Saw & Wire Saw Cutting Services

Concrete cutting is one of the basic services that ZT offers. With the country's largest supply services company, ZT is qualified and properly equipped to handle concrete drilling projects of any size. From Core Drilling to Flat Sawing and Wall Sawing to Curb Cutting, ZT can master any concrete cutting need. ZT can drill concrete holes as small as 3/4" up to 18" in diameter and any depth.

Core Drilling

Diameter range: 20mm - 900mm
Plumbing, electrical, cable & Air-conditioning
Sleeves
Fast & precise
Stitch Core drilling



Floor Sawing

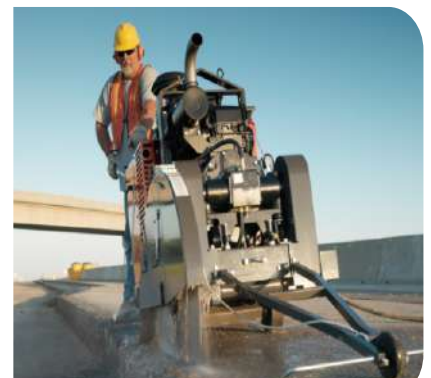
Up to 380mm thick
Expansion joints
Slab openings
Trenching
Joint reaming

Wall Sawing

Up to 400mm thick
Accurate openings in floors & walls
Doors, windows, ducts

Wire Sawing

Any thickness
Fast & versatile
Opening in walls & floors





DEMOLISHING

Zoom Technology only uses cutting edge concrete demolition techniques which maximize productivity and enhances safety. We are mindful of our capabilities and our client's limitations to provide the reassurance of zero lost time.

Concrete Demolition

Handheld demolition Tough to get to place



Rock Blasting

Safe and environmentally conscience
Minimal dust and disruption

CONCRETE DOWELING AND CHEMICAL ANCHORING

Specialties are Re-Baring / Grouting through design managers. Our managers knows very well how to reinforced concrete construction through a method for proper fabrication and placement of reinforcement bars as per the design and drawings for RCC works. Technicians properly drills and do cleaning through wire brushes and blowers then used SINTO Epoxy (TECFI - Italian Brand) with (ETA, CE, and Sysmic) Approvals.





- ◆ **WATER PROOFING**
- ◆ **JOINT SEALING**
- ◆ **EPOXY & PU FLOORING**
- ◆ **CONCRETE REPAIRING & STRENGTHENING**

WATER PROOFING

- **BITUMINOUS DAMP & WATERPROOFING**
- **CEMENTITIOUS WATERPROOFING**
- **ACRYLIC WATERPROOFING**
- **POLYURETHANE WATERPROOFING**
- **HOT-APPLIED & SHEET WATERPROOFING MEMBRANES**

BITUMINOUS DAMP & WATERPROOFING

Application Area:

Underground concrete foundations, Wall
Walls below cladding systems
Concrete slabs
Basement walls
As Protective coating



CEMENTITIOUS WATERPROOFING

Application Area:

Underground concrete foundations, Wall
Concrete slabs
Basement walls
Water retaining structures and reservoirs
Bathrooms and wet areas
Non-toxic suitable for drinking water



ACRYLIC WATERPROOFING

Application Area:

Suitable for application on concrete
masonry plaster etc Sloped roofs and
vertical walls
Over existing terrazzo tiles
Over corrugated iron sheets
Over roof polyurethane foam





POLYURETHANE WATERPROOFING

Application Area:

Dry concrete fibrous cement mosaic
cement roof tiles Wood corroded metal
and galvanized steel Exposed roofs
balconies and decks

Wet areas kitchens and bathrooms

Shed roofs, Irrigation channels

Basement and Retaining Walls Bridge
platforms Internal and external
applications



HOT-APPLIED & SHEET WATERPROOFING MEMBRANES

Application Area:

Roofs, Bridges and tunnels

Green roofs and planters

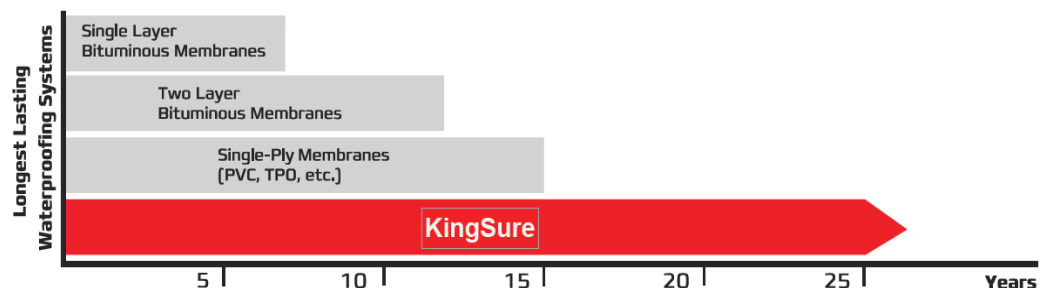
Metal roof decks & Parking garages

Foundation and basement walls Plaza
decks



BENEFITS OVER OTHER METHODS

There are 6 major types of roofing systems used in the commercial roofing marketplace today. These 6 systems account for 95% of all commercial and industrial roofing systems. Common waterproofing applications include schools, hospitals, industrial facilities, and office and residential buildings. The anticipated average service life of most waterproofing systems is 10 years, while KingSure's approved systems guarantee a minimum of 30 years.





JOINT SEALING

Designed to allow for movement in joints, while protecting structures from chemicals and weathering elements such as water , wind and sunlight while preserving the overall aesthetic design

Joint Sealing Systems

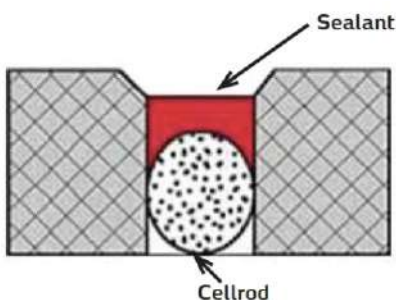
- General Purpose acrylic sealant
- Neutral cure silicone sealants

Civil & Pavement Sealants

- One component non-sag highly elastic polyurethane sealant
- Two components non-sag highly elastic polyurethane sealant
- One component self leveling highly elastic polyurethane sealant
- High performance polysulphide civil sealant
- Pitch free high performance cold applied sealant
- Elastomeric high performance pavement joint sealant
- Two component solids sealant industrial loads and traffic
- Elastomeric high performance one component fuel and oil resistant joint sealant

Joint Fillers Covers & Accessories

- Closed Cell polyethylene backing rod nonabsorbent and rot proof
- Compressible bitumen impregnated wood fiber sheets
- High density compressible closed cell polyethylene joint filler





Flooring System

Epoxy

The epoxy range is hard-wearing, dimensionally stable and decorative. It provides surfaces that are hygienic, easily cleanable and resistant to chemical spillage, with excellent adhesion and slip resistant options.

Polyurethane

The polyurethane range is hard-wearing, non-tainting, UV stable, flexible, decorative, and has excellent adhesion. It offers resistance to chemical spillage, different options for slip resistance and steam-cleaning ability for certain products.

MMA

The MMA range provides very fast installation and curing. It is UV stable and decorative, with slip resistant options available and suitable for application at very low temperatures.

Cementitious based flooring

The cementitious based flooring product range is suitable for new-build and refurbishment projects. It is economical and compatible with a wide range of floor substrates. It also offers self-leveling options that are fast drying, available in a range of colours and can be used as a final floor finish subject to traffic.

Dry shakes hardeners & stamped concrete

Dry shakes hardeners and stamped concrete product ranges can be used as monolithic flooring, and demonstrate improved abrasion resistance, low maintenance and impact resistance. These products also reduce surface dust, and are available in a range of colours.

Curing compounds, liquid hardeners & sealers

These products can improve concrete's curing process resulting in better surface properties. They can also reduce dusting and where sealers are concerned, reduce surface absorption.

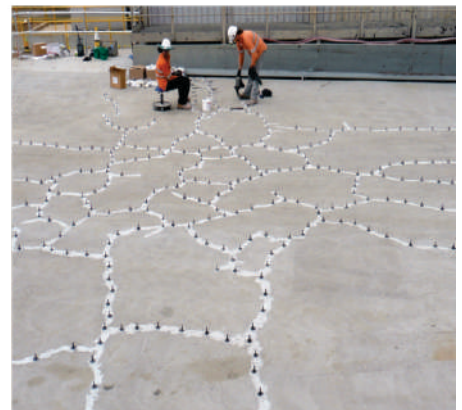
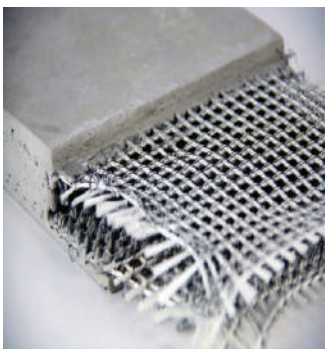




Concrete Repairing & Strengthening

Zoom services is a concrete repairs specialist, offering a range of expert concrete refurbishment and repair services, including concrete repair and protection, cathodi protection, carbon fibre strengthening and concrete crack sealing solutions. We have over 10 years' experience in the concrete industry, repairing water and wastewater industry assets and concrete structures including: industrial units, commercial & residential buildings, historical monuments, bridges, reservoirs, water storage tanks, water towers, water and waste water treatment plants, storm tanks and silos. We use a varied range of specialist repair mortars in our role as a dedicated concrete repairs contractor. These include a range of sprayed concrete repair systems that are tailored to each specific concrete repair through investigation by our experienced staff. Over the years we have been able to develop the specialist knowledge to identify, plan and implement the correct approach for each individual concrete repair requirement for our clients.

- **Cementitious Repair**
- **Epoxy Repair**
- **Injection**
- **Carbon Fibre Reinforced**
- **Strengthening**



ADMIXTURE

Admixtures are formulated chemical compounds that are used to modify certain properties of concrete.

Admixtures are the material, other than

Cement

Water

Aggregates



Chemical Admixture

These admixtures are added to concrete mix before or during mixing of concrete



ZOOM TECHNOLOGY A ZOOM Group holdings Company

ISLAMABAD OFFICE

7, 9, LGF Malik Complex, 80 West, Jinnah Avenue, Blue Area, Islamabad.

Ph: +92 51 2150101, 2802576 | Fax: +92 51 8736966

Cell: +92 300 8551392

LAHORE OFFICE

Cell: +92 301 8551393

+92 301 8551397

info@zoomtechnology.com.pk | www.zoomtechnology.com.pk

Follow us on

